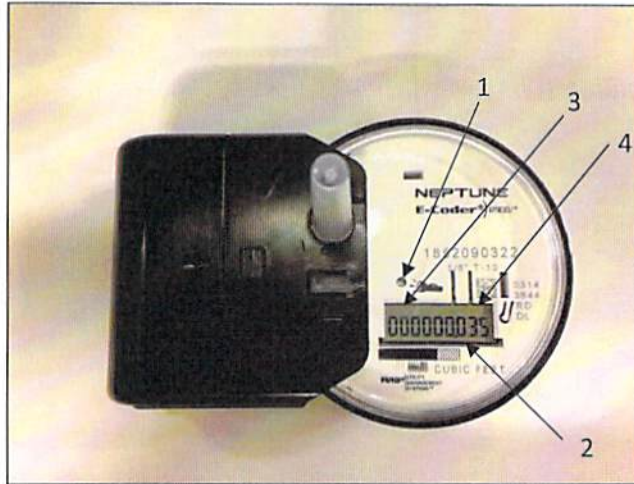


Explaining Your New Neptune Water Meter



1 - Light Sensor

There is a recessed sensor under the small hole near the center of the faceplate, which supplies the power for the LCD panel (light activated). A common household flashlight pointed at the light sensor will revive the meter from "sleep" mode.

2 - Reading Screens

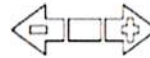
The meter shown in the photo is displaying a 9-digit water meter reading in cubic feet of water consumption.

3 - Leak Indicator displays a possible leak with a dripping faucet icon in the upper left corner of the LCD panel.



OFF	No leak indicated.
Flashing	Intermittent usage or leak indicated. Water usage/leak detected during at least 50 of the 96 15-minute intervals during the last 24-hour period.
On Continuously	Continuous usage or leak indicated. Water used during all 96 15-minute intervals during the last 24-hour period.

4 - Flow Indicator shows the direction of flow through the meter with an arrow icon in the upper right corner on the LCD panel.



ON	Water in use
OFF	Water not in use
Flashing	Water running slowly
(-)	Reverse flow
(+)	Forward flow

READING YOUR NEPTUNE WATER METER

Hold a bright flashlight on the light sensor (As described in "1-Light Sensor" above).

The LCD display will display 2 intermittent display screens:

- A. Meter reading to the nearest thousandth (3 decimal places).
- B. Rate of flow.

To check for a water leak, examine the rate of flow display:

- A. Shut off all water in the house.
- B. Activate the meter using a flashlight.
- C. Observe the rate of flow display screen.
- D. An observed rate reading of greater than 0.000, corresponds to water moving through the meter. If all water has been shut-off then a leak may exist in your water system at some point between your water meter and your faucets and other water fixtures.
- E. Contact a licensed plumber to identify and remedy the problem as soon as possible to avoid excessive billing.

4 Activating and Reading the E-Coder)R900i

How to Activate LCD Using the Solar Panel

The E-Coder)R900i has a solar panel to power the LCD display. See Figure 4.

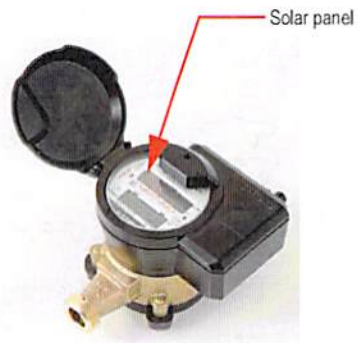


Figure 4 Solar Panel for E-Coder)R900i

The solar panel activates the LCD display when the unit is exposed to a light source. If the LCD does not reactivate as expected, try shining a flashlight on the light sensor. See Figure 5.



Figure 5 Activating E-Coder)R900i

How to Read

It is important to become familiar with the information available from the meter. To identify this information the following icons and displays are helpful.

Table 2 Icons and Displays



Flow/Leak Indicator shows the direction of flow through the meter:

ON	Water in use.
OFF	Water not in use.
Flashing	Water is running slowly/low flow indication.



Leak indicator displays a possible leak:

OFF	No leak indicated.
Flashing	Intermittent leak indicated. Water used during at least 50 of the 96 15-minute intervals during the previous 24-hour period.
Continuous ON	Continuous leak indicated. Water used during all 96 15-minute intervals during the previous 24-hour period.



Nine-digit LCD displays the meter reading in billing units of measure. The number is shown in odometer style, reading left to right.

- 1 First four digits – Typical billing digits.
- 2 Last three digits – Testing units used for meter testing
- 3 Fifth and sixth reading digits – Reading units

Common Causes of Leaks

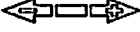
If the leak indicator is flashing or continuously on, the E-Coder)R900i is indicating that a possible leak can exist. Leaks can result from various circumstances. To better help you identify a possible leak, the following table contains some common causes of leak problems.

Table 3 Possible Leaks

Possible Cause of Leak	Intermittent Leak	Continuous Leak
Outside faucet, garden or sprinkler system leaking	✓	✓
Toilet valve not sealed properly	✓	✓
Toilet running		✓
Faucet in kitchen or bathrooms leaking	✓	✓
Ice maker leaking		✓
Soaker hose in use		✓
Leak between the water meter and the house		✓
Washing machine leaking	✓	✓
Dishwasher leaking	✓	✓
Hot water heater leaking		✓
Watering yard for more than eight hours	✓	✓
Continuous pet feeder		✓
Water-cooled air conditioner or heat pump	✓	✓
Filling a swimming pool		✓
Any continuous use of water for 24 hours		✓

How to Tell if Water is in Use

To determine if water is in use, complete the following steps:

- 1 Check the  flow indicator by closely watching it for two minutes.
- 2 Determine the following conditions:
 - If the arrow is flashing, then water is running very slowly.
 - If the arrow is continuously ON, water is running.
 - If the arrow does not flash, water is not running.

What to Do if There is a Leak


The following checklist can be helpful if the E-Coder)R900i leak indicator shows a possible leak.

Table 4 Checklist for Leaks

- Check all faucets for possible leaks.
- Check all toilets and toilet valves.
- Check the ice maker and water dispenser.
- Check the yard and surrounding grounds for a wet spot or indication of a leaking pipe.

If Continuous Leak is Repaired

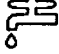
If a continuous leak is found and repaired, complete the following steps:

- 1 Use no water for at least 15 minutes.
- 2 Check the  leak icon.

If the leak indicator changes from continuous ON to flashing, then a continuous leak is no longer indicated.

If Intermittent Leak is Repaired

If an intermittent leak is found and repaired, complete the following steps:

- 1 Check the  leak icon after at least 24 hours.
- 2 If the leak has been correctly repaired, the leak icon changes from flashing to OFF.

Software

A software update is required for the N_SIGHT™ host software to interpret the enhanced data communicated feature from the Neptune E-Coder)R900i.